



# ALUDEX<sup>®</sup> MAX

## SELF-ADHESIVE VAPOUR BARRIER

The vapour barrier for warm roofs  
with ZINC PLUS

To be installed  
with **VMZINC**

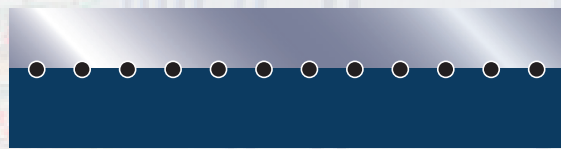
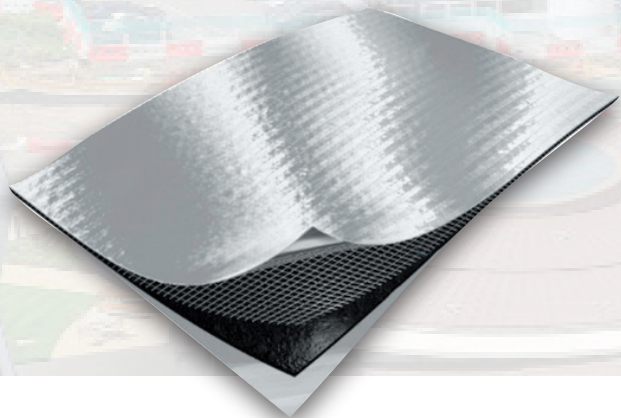
### Benefits


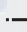


- Resistant with its glass fibre reinforcement
- Easy to install

### Applications

- Warm roof for buildings with low to average interior humidity
- Warm roof up to interior climate class 4





-  Aluminium sheet
-  PE Film (ca. 70g/m²)
-  High polymer SBS/SIS (self-adhesive)
-  Glass fibre yarn reinforcement

## COMPONENTS

### Description

Thickness	0,6 mm ± 10 %
Format (Width x Length)	1,08 m x 40 m
Weight	31 kg/roll - 700g/m²
Surface area	43,2 m²/roll
Packaging	Roll 20 rolls per pallet

### Characteristics

The vapour barrier is made up of an upper layer of aluminium, internal fibre glass reinforcement and an adhesive high polymer SBS sub-layer protected by a peel-off polyethylene film.

### Technical specificities

Water vapour diffusion (Sd)	> 1 500 m in compliance with EN 1931
Tensile strength (longitudinal/transverse)	≥ 800/700 N/5 cm in compliance with EN 12311-1
Shear strength of joints	657 N/5 cm in compliance with EN 12317-1
Tear strength	200 N in compliance with EN 12310-1
Low temperature flexibility	-20°C in compliance with EN 495-5
Air permeability	0.075 m³/(h.m²) at 50 Pa in compliance with EN ISO 9237
Fire rating	Class E in compliance with EN 13501-1

### Installation

- The vapour barrier is installed at a temperature of 5°C minimum
- For timber, masonry and non-lacquered corrugated steel substructures, apply the Initial C350 primer beforehand on the entire surface for good adhesion between the substructure and the vapour barrier's self-adhesive layer.

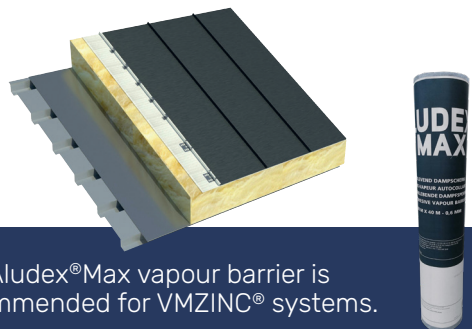
Wait approximately 35 minutes for the substructure to be dry before installing the vapour barrier

- Aludex®Max must be installed using the Initial C350 primer on temporary roofs and where there is vulnerability to wind. This is not necessary when the insulation and zinc are applied just after
- For supporting elements in lacquered steel, the vapour barrier can be glued directly
- Unroll the Aludex®Max vapour barrier on the substructure
- Peel off the plastic film and install on the substructure
- Overlap between strips must be 5 cm
- Roll on the overlaps using a hand roller
- The thickness of the vapour barrier's upstand flashings at corners and extremities must be the same as the insulation thickness + 5 cm.

## AREA OF USE

### Authorised substructures

Installation on masonry, solid timber or wood-based panels, and corrugated steel.



The Aludex®Max vapour barrier is recommended for VMZINC® systems.

### VM Building Solutions plc

Collier House Mead Lane, Hertford - Herts SG13 7AX  
T 0203 445 5640, vmzinc.uk@vmbuildingsolutions.com  
www.vmzinc.co.uk

**VM BUILDING SOLUTIONS**